

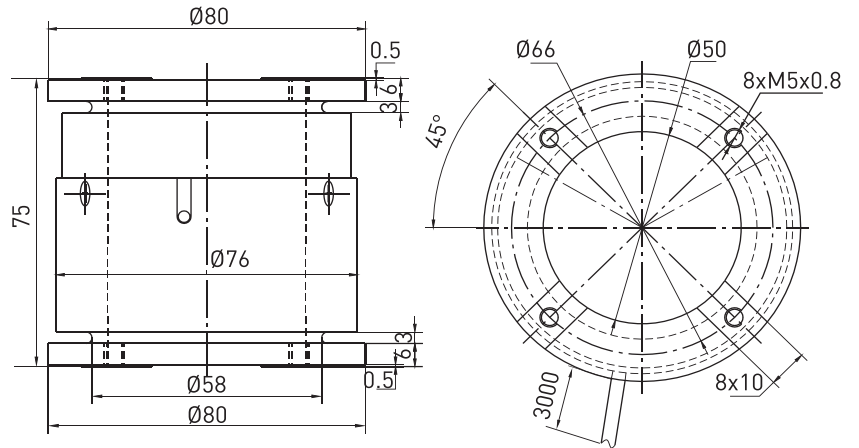
F9855



Features & Applications

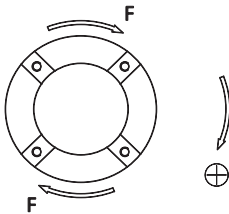
- Static torque sensor
- Made of anodized aluminum alloy
- Compact structure, easy to install
- IP65 protection
- Used for static, non-continuous rotational torque force measurement, max 90°

Size and Capacity

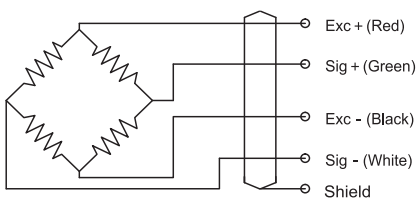


Capacity (Nm)	Material	Weight
20/30/34/50	Aluminum alloy	0.4kg

Load Direction



Schematic Wiring Diagram



Technical Parameters

Specifications	Technique
Rated output	1.5 ± 5% mV/V
Non-linearity	0.05% F.S.
Hysteresis	0.05% F.S.
Repeatability	0.05% F.S.
Temp. effect on output	0.05% F.S. / 10°C
Temp. effect on zero	0.05% F.S. / 10°C
Input impedance	750 ± 30 Ω
Output impedance	702 ± 3 Ω
Insulation	≥2000MΩ
Recommended excitation	5~10V DC
Maximum excitation	12V DC
Compensated temp. range	-10 ~ 60°C
Operation temp. range	-20 ~ 80°C
Safe overload	150% F.S.
Ultimate overload	200% F.S.
Cable size	∅3 × 3000 mm
Protection class	IP65
Cable color code	Input: Red(+) Black(-); Output: Green(+) White(-);

Note: Cable shield is not connected to element.