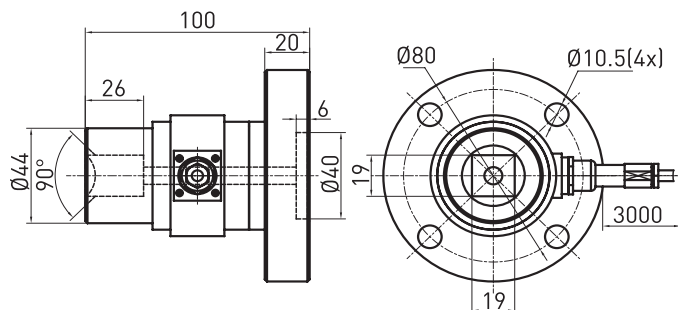


### Size and Capacity



### Features & Applications

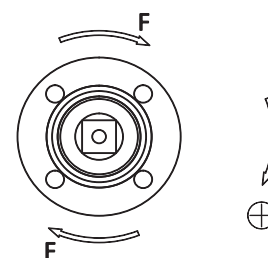
- Static torque sensor
- Made of stainless steel or alloy steel
- Compact structure, easy to install
- IP 65 protection
- Used for static non-continuous rotational torque force measurement, max 90°

Capacity (Nm)	Material	Weight
200/300/400/500/600/700/800	Stainless steel Alloy steel	1.8kg

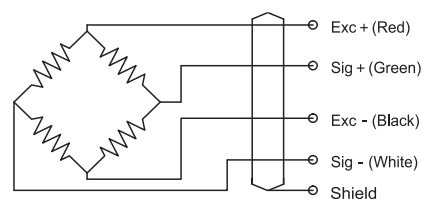
### Technical Parameters

Specifications	Technique
Rated output	$2.0 \pm 10\%$ mV/V
Zero balance	$\pm 2\%$ F.S.
Non-linearity	0.25% F.S.
Total error	0.25% F.S.
Temp. effect on output	0.2% F.S. / 10°C
Temp. effect on zero	0.2% F.S. / 10°C
Input impedance	$400 \pm 20 \Omega$
Output impedance	$350 \pm 5 \Omega$
Insulation	2000M $\Omega$ / 100VDC
Recommended excitation	5-10V
Maximum excitation	15V
Compensated temp. range	-10 ~ 60°C
Operation temp. range	-20 ~ 80°C
Safe overload	120% F.S.
Ultimate overload	150% F.S.
Cable size	$\varnothing 5 \times 3000$ mm
Protection class	IP65
Cable color code	Input: Red(+) Black(-); Output: Green(+) White(-);

### Load Direction



### Schematic Wiring Diagram



Note: Cable shield is not connected to element.