

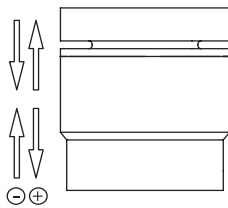
F2816



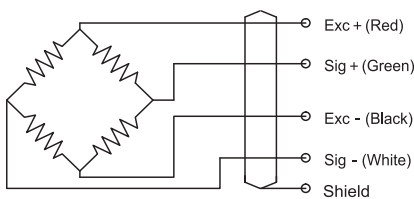
Features & Applications

- Tension and compression application
- Made of stainless steel
- IP67 protection, waterproof, corrosion resistance
- Mainly used for testing machine, compressive force measuring systems

Load Direction

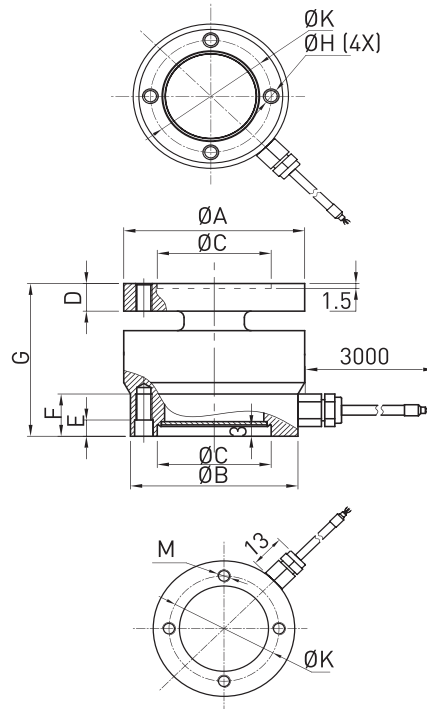


Schematic Wiring Diagram



Note: Cable shield is not connected to element.

Size and Capacity



SIZE (mm)	A	B	C	D	E	F	G	H	K	M	Material	Weight
CAP (kN) 0.5/1/2/3/5/10	54	50	34	8.5	5	13	47	5.5	42	M5 (8x)	Stainless steel	0.8kg
20/30/50/100	95	90	55	22	-	20	72	-	70	M10 (16x)		2kg

Technical Parameters

Specifications	Technique
Rated output	1.0 ± 10% mV/V
Zero balance	± 2% F.S.
Non-linearity	0.5% F.S.
Hysteresis	0.1% F.S.
Repeatability	0.1% F.S.
Creep (30min)	0.2% F.S.
Temp. effect on output	0.05% F.S. / 10°C
Temp. effect on zero	0.05% F.S. / 10°C
Input impedance	750 ± 30Ω
Output impedance	700 ± 5Ω
Insulation	≥5000MΩ / 100VDC
Recommended excitation	10V
Maximum excitation	15V
Compensated temp. range	-10 ~ 60°C
Operation temp. range	-20 ~ 80°C
Safe overload	150% F.S.
Ultimate overload	200% F.S.
Cable size	Ø4 × 3000 mm
Protection class	IP67
Cable color code	Input: Red(+) Black(-); Output: Green(+) White(-);